

Winged (Alatae) Aphids on Desert Lettuce

Dark abdominal dorsal markings

No abdominal dorsal markings

Abdominal Dorsal Patch

Dark patch on upper abdomen
Antennae Tubercule Convergent
Cornicles dark and swollen

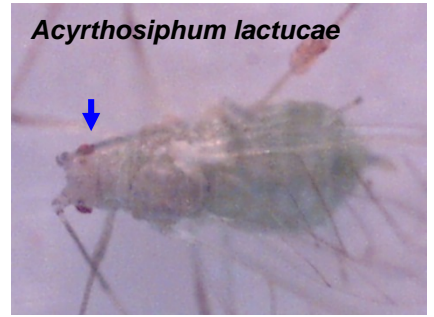


Green Peach aphid



COLLEGE OF AGRICULTURE
AND LIFE SCIENCES
COOPERATIVE EXTENSION
Yuma Agricultural Center

Pear shaped with **red** eyes,
Abdomen green with white, waxy stripes
Legs and cornicles light



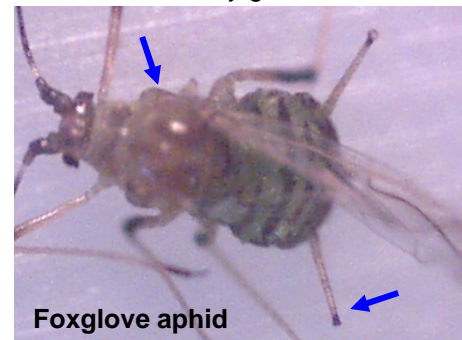
Acyrthosiphum lactucae

Abdominal Dorsal Stripes

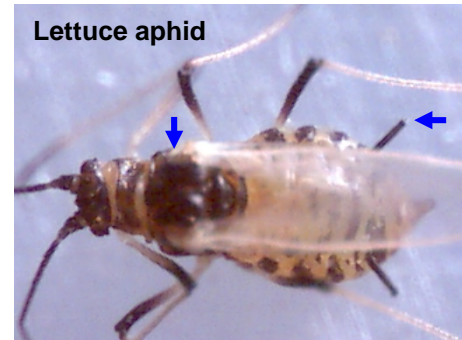
Body elongate, large, no markings
Legs segments dark, tips of cornicles dark
Cauda and cornicles are long
Thorax light, abdomen green

Tips of cornicles dark, thorax light
Abdomen usually green in color

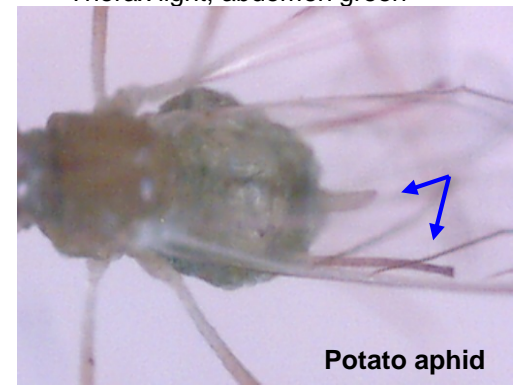
Cornicles and thorax dark
Abdomen brown - red in color



Foxglove aphid



Lettuce aphid



Potato aphid

Wingless (Apterous) Aphids on Desert Lettuce

No abdominal stripes

Abdominal stripes or bands

Green spots near cornicles

Body shiny, green and pear shaped
Cornicle tips and leg segments dark
Dark green patches at base of cornicles



Foxglove aphid



THE UNIVERSITY OF ARIZONA
COLLEGE OF AGRICULTURE AND LIFE SCIENCES
COOPERATIVE EXTENSION
Yuma Agricultural Center

Body dull, pear shaped, light waxy bloom
Pale abdominal stripes, red eyes
Cornicles, antennae, and legs light



Acyrtosiphum lactucae

No spots near cornicle

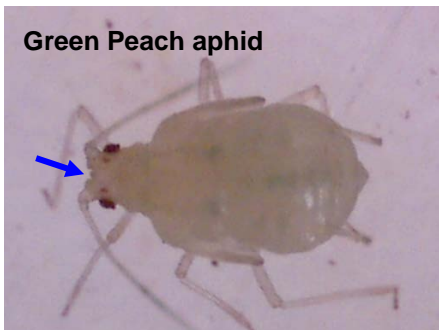
Body shiny, tan to red in color
Dark abdominal stripes
Tips of cornicles dark
Antennae, legs have dark segments



Lettuce aphid

Antennae tubercles converging inward
Pear shaped, legs and cornicle slight
Lateral dark green stripes along abdomen

Green Peach aphid



Antennae tubercles diverging out
Body green and elongate, long cornicles
Legs long, Very mobile

Potato aphid





Lettuce Aphid
Nasonovia ribisnigri



Foxglove Aphid
Aulacorthum solani



Green peach Aphid
Myzus persicae



Lettuce Aphid
Nasonovia ribisnigri



Foxglove Aphid
Aulacorthum solani



Green peach Aphid
Myzus persicae



Acyrthosiphum lactucae



Potato Aphid
Macrosiphum euphorbiae



Plate 3. A) Green Peach Aphid (GPA) mature alate and immatures on lettuce, B) GPA apterous nymphs on lettuce on broccoli, C) GPA alate; note the converging antennal tubercles and dark patch on abdomen, D) GPA apterous form; note the converging antennal tubercles

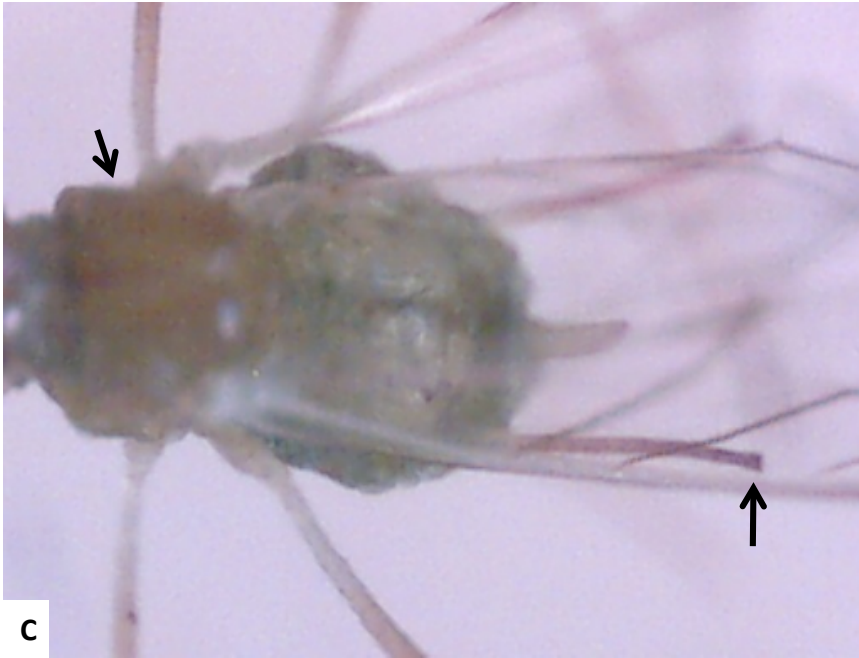


Plate 4. A) Potato Aphid (PA) mature alate, B) Mature PA apterous nymph, C) PA Alate; note the light thorax and long cornicles, D) PA apterous form; note the long cornicles and cauda terous; note red eyes and light cornicles

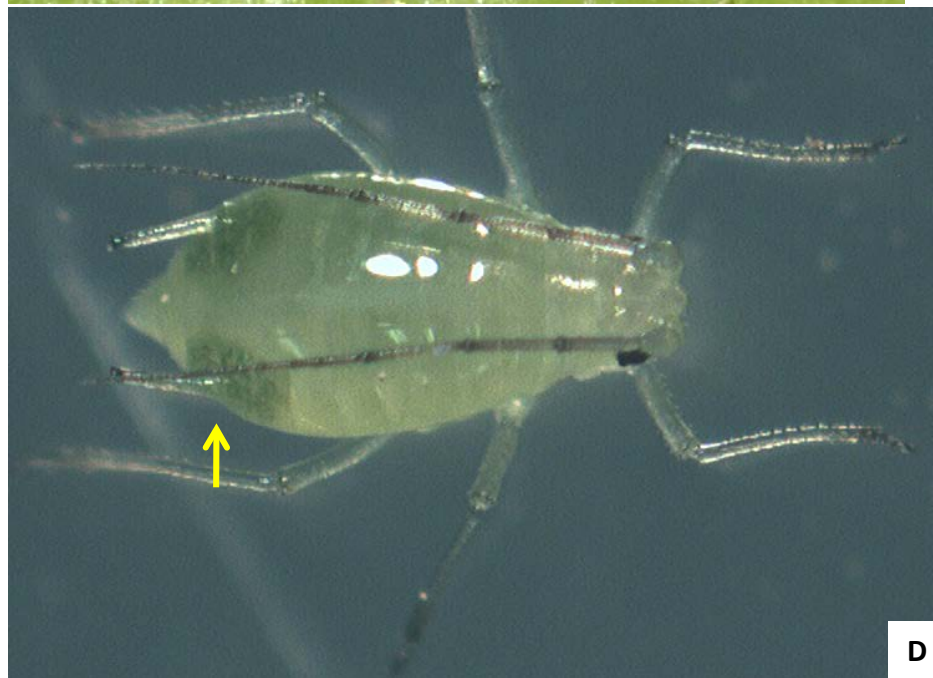


Plate 5. A) Foxglove Aphid (FGA) mature alate, B) Mature FGA apterous nymph, C) FGA Alate; note the light thorax and dark tips on cornicles, D) FGA apterous form; note dark patches at base of cornicles

A

VegIPM Update, Vol. 6, No. 23–Nov 11, 2015

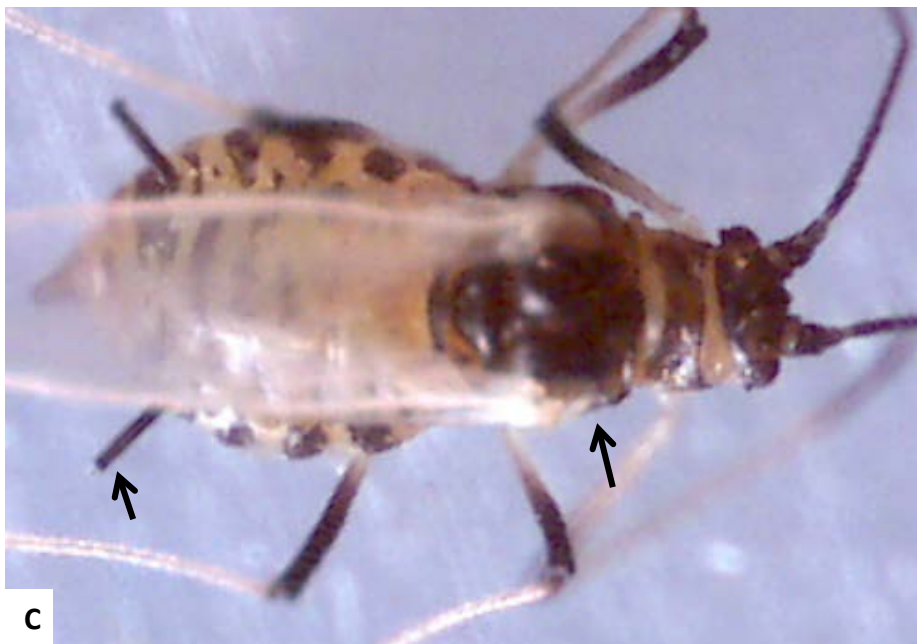
B**C****D**

Plate 6. A) Lettuce Aphid (FGA) mature alate, B) Mature LA apterous nymph, B) LA Alate; note the dark thorax and cornicles, D) FGA apterous immature forms; note the red color of abdomen and thorax

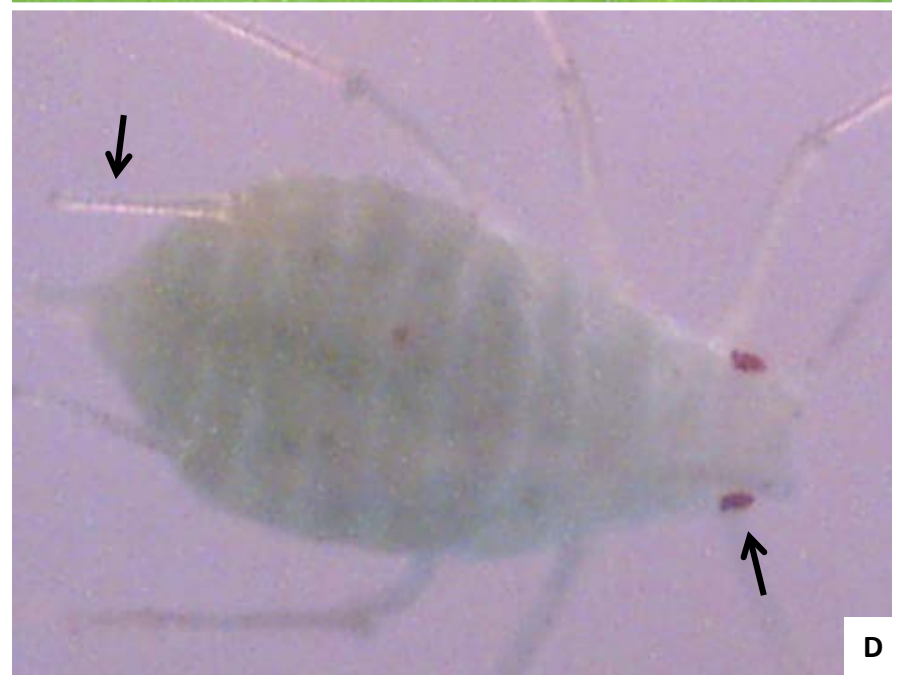
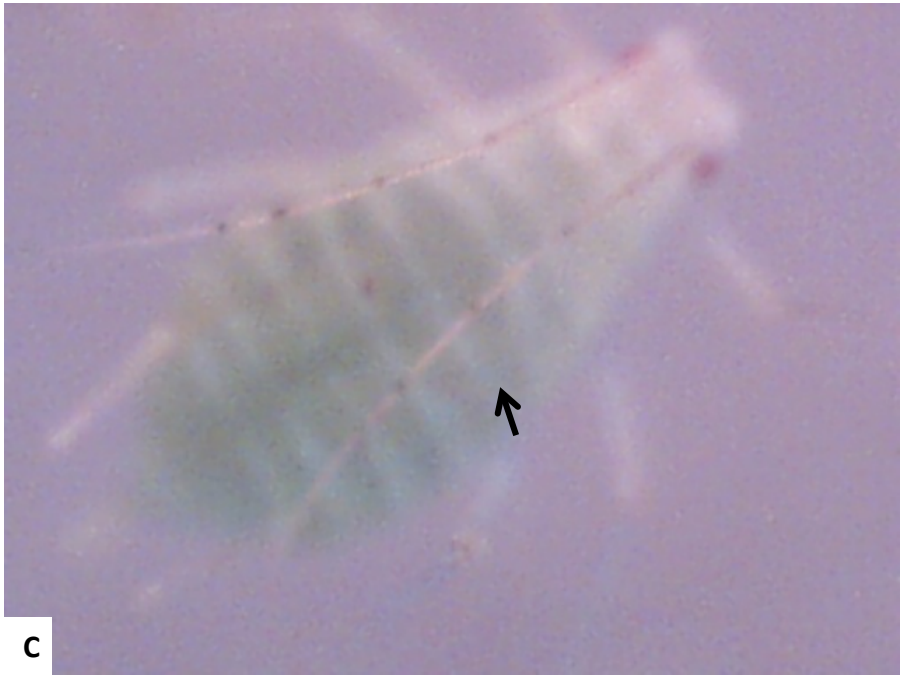


Plate 7. A) *Acyrthosiphum lactucae* (AL) mature alate., B) Mature and immature AL apterous nymphs, C) Alate or apterous; note the white waxy stripes on abdomen, D) Alate or apterous; note red eyes and light cornicles



A

B

C

D

Plate 8. A) GPA colonizing spinach leaf , B) FGA apterous form on celery stalk, C) FGA and GPA on celery leaf, D) Melon aphid apterous forms on celery leaf

A**B****C****D**

Plate 8. A) Cabbage aphids apterous forms on seed pods of broccoli seed crop, B) mature and immature cabbage aphid nymphs C) Turnip aphid apterous forms on cauliflower leaf, D) Turnip Aphid colonizing cauliflower plant