



School and Child care facility IPM

Will our program succeed?

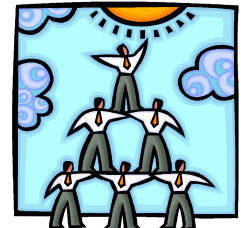
IPM programs require some basic components to be effective in reducing pests and exposure to pesticides. If you're thinking about starting a program in your school district or child care facility, consider the following :

Minimum implementation standards

- ✚ There are **NO** scheduled pesticide sprays.
- ✚ Facility administration are involved.
- ✚ Those responsible for the cultural (good sanitation practices) and mechanical (pest exclusion) components of the IPM program have been trained on how to consider pest issues and incorporate appropriate consideration into existing job responsibilities.
- ✚ A District or corporate IPM Coordinator is appointed from in-house staff or contracted service personnel. They assume the role of a professional educator/diagnostician of the district staff.
- ✚ District IPM Coordinator or contract IPM professional may treat for pests based on identification and on-going monitoring.

Reasons for SUCCESSFUL implementation

- ✚ The school or child care administration is committed to improving children's environmental health.
- ✚ Administrative support and authority is given to the District IPM Coordinator.
- ✚ The pest management staff receives technical training AND necessary resources for their IPM efforts.
- ✚ The school/child care facility community (kitchen and custodial staff, teachers, etc.) understand how their actions can promote or reduce pests, and are empowered as pest managers to participate.
- ✚ Confirmation of IPM benefits are shared with the school or child care facility community (e.g. reduced pest prevalence and pesticide application).
- ✚ Media recognition and other acknowledgement opportunities are embraced as a way of affirming the staff's commitment and achievements.
- ✚ Self evaluation occurs regularly. Independent verification of programs may be undertaken. Schools can apply for IPM STAR Certification



<http://www.ipminstitute.org/school.htm>



Reasons for *failed* IPM

- ✚ Poor communication.
- ✚ Poor pest management practices are common when administrators contract low-bid services and are not involved in the program.
- ✚ Poor commitment. Structural remediation may be required and should be considered a children's environmental health priority.
- ✚ No point person i.e. the IPM Coordinator for the district or corporation
- ✚ Not utilizing the best technical pest management professional. Low bid contractor process is used.
- ✚ Not understanding the economic value of IPM.
- ✚ Failing to educate and involve ALL of the school community members.



With successful IPM programs, what do we find?

- 1) Improved communication and cooperation within a school or facility community
- 2) Pleased parents
- 3) A school system that runs more efficiently
- 4) Partnerships with the larger community and those groups that initiate policy standards affecting our children's health through
 - Education
 - Health Services
 - Environment
- 5) **IPM is an education-based, sustainable approach to pest management that in the long term often saves school systems money. More importantly, it provides a safer learning environment for our children.**



Healthier Environments → Healthier students

Healthier students → Higher Academic Achievement