



SYLVIA ALICE EARLE, Ph.D.

BOTANIST, MARINE BIOLOGIST, UNDERSEA
EXPLORER, OCEANOGRAPHER, AUTHOR, and MORE!!!

NICKNAMES

- Affectionately “Her Deepness” ~ New Yorker & NY Times
- “Living Legend” ~ Library of Congress
- “Hero for the Planet” ~ Time Magazine



EARLE'S EARLY LIFE

- Born August 30, 1935 Gibbstown, NJ
- Moved to FL @ 13 yoa
- First (Helmet) Dive @ 17 yoa



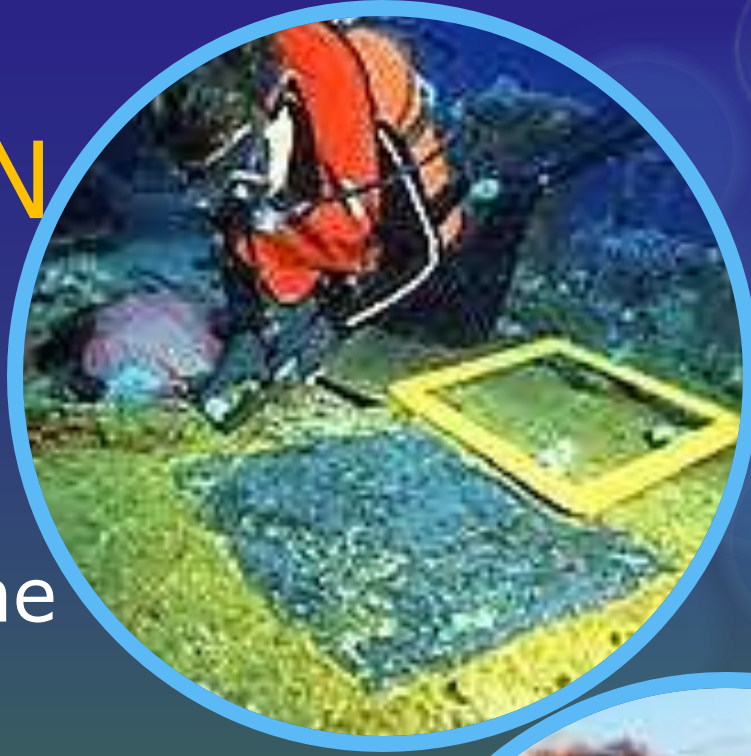
EDUCATION

- B.S. in Botany ~ FSU 1955
- M.S. in Botany ~ Duke University, NC 1956
- Ph.D. ~ Duke University, NC 1966
- Also Currently has 15 Honorary Degrees



EDUCATION

- Dissertation ~
“Phaeophyta of the Eastern Gulf of Mexico”
- She still follows project & has collected over 20,000 samples of algae



SCUBA!

- One of the 1st to utilize modern SCUBA equipment for research
- Holds record for deepest women's solo dive (3,281 feet)



CONTRIBUTIONS TO OCEAN EXPLORATION

- 1969 Tektite Project
- Enclosed habitat on ocean floor 50 feet below surface for teams of scientists to live (and research) for weeks at a time.
- **1970 - Tektite II!**



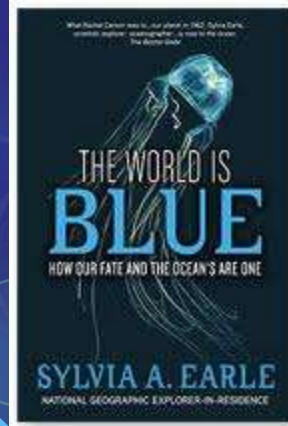
CONTRIBUTIONS TO OCEAN EXPLORATION

- 1980's she and (former) husband who was an engineer began to design and build submersibles
- (Speaking of family ... she has also raised 3 children!)



PUBLICATION

- More than 150 scientific and popular publications
- *7 Books*
- "Exploring the Deep Frontier: The Adventure of Man in the Sea" 1980
- "Sea Change: A Message of the Oceans" 1995
- "Dive!" 1999
- "Hello Fish" 2001
- "Sea Critters" 2000
- "Ocean: An Illustrated Atlas" 2008
- "The World is Blue: How our Fate and the Oceans are One" 2009



CAREER

- 1st Woman to Hold Position of Chief Scientist for the U.S. National Oceanic and Atmospheric Administration (1990 – 1991)
- Currently explorer-in-residence at the National Geographic Society along with many, many more positions & titles.



Google™ earth

- Dr. Earle played a big role in Google Earth mapping of the ocean floor (Google Ocean)



RECOGNITION

-  TV AWARD
WINNER 2009
- “To Join Me in
Protecting the
Vital Blue Heart
of the Planet” ~
Dr. Sylvia Alice Earle
- http://www.ted.com/talks/sylvia_earle_s_ted_prize_wish_to_protect_our_oceans.html

